



ACURA

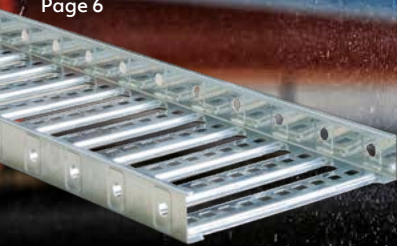
ISSUE 3

# ON SITE

## ELECTRICAL CABLE TRAY

THE SOLUTIONS & SERVICE ONLY ACURA CAN PROVIDE.

Page 6



## IN THE SPOTLIGHT

Page 3

## The NEW Multi-Service Retrofit Collar



A guide to our concrete fasteners & fixings range.

Page 4





EASY TO INSTALL | VERSATILE | COST EFFECTIVE

It is vital that penetrations do not compromise the fire resistance level (FRL) of a building element - wall or floor. ACURA Snap Fire Collars have been designed and made to be cast into a concrete slab, or retro fitted to the outside of a wall, floor or ceiling.

## Snap Fire Collar Options

We know one solution simply doesn't suit all trades or applications, and that is the key reason we keep a range of fire collar options in high stock levels, ready to be delivered to you on site enabling you to deliver a compliant job on time.

### CAST-IN

Cast-in Fire Collars are designed to be secured to the formwork for a concrete slab prior to the concrete being poured.

Available for Floorwaste & Shower and Stack applications, in both Low-top and High-top configurations.



### RETRO-FIT

Retrofit Fire Collars are designed to be mounted underneath a slab or onto a wall after construction.

They can be fitted prior to, or after, the pipe has been installed. Available for Floorwaste & Shower and Stack applications.



### HVAC & ELECTRICAL

HVAC & Electrical Collars are Retrofit Fire Collars designed to be mounted to a wall as a penetration seal for a range of HVAC and Electrical Services.

They can be fitted prior to, or after, the services have been installed.



### COMPOSITE PLASTIC/AL

Plastic/Aluminum Pipe Fire Collars are externally mounted collars designed to collapse pipes comprised of plastic and aluminum layers.



## Testing

All the ACURA Snap fire collars go through two key testing regimes. The stack test and the floor waste test. There is an important difference between the two.

Where the floorwaste test sees thermocouples placed on an open part of the grate, the stack test has 2 meters of pipe on the non-fire side and has thermocouples placed in an insulated position on the outside of the pipe - 25mm from the wall or floor.

Collars that pass the floorwaste test will always pass the stack test, but those that pass the stack test may not always pass the floor waste test.

**SNAP's testing is independent; they do not test at their own facilities. Reports are available on their website.**

## The alternative.



ACURA's FYREBOX™ Maxi are an intumescent type product designed to prevent the spread of fire through service penetrations. These have been tested rigorously with a multitude of service types, service configurations, and wall and floor types and is one of the most fire tested products in the world.

### Application.

For use in any building where penetrations are made through plasterboard, hebel and masonry walls and floors for services.

Tested and approved for :

- Electrical, data and communication cables
- Steel and copper pipes
- Insulated copper pipes
- Typical air conditioning services
- Small conduits
- Pex and gas pex

**Not sure which solution is best for your project?**

Contact our account managers today to find the right fit for your project.

**1300 750 750**



The fast and easy to install multi-service fire collar, which requires no wrapping or graphite paste.



## • The Multi-Service Retrofit Collar

The Snap MS70R multi service fire collar is a metal, retrofit fire collar for fire-rated plasterboard, concrete and masonry walls. Tested and assessed systems include electrical power cables, insulated copper pipes, as well as data & optical fibre cables.

### Features

- Easy to Install - simply affix the collar to the wall
- No messy graphite paste or sealants required in the collar
- No wrapping of the services is required
- Covers a wide range of service mixes and wall types
- Comprehensively tested in a genuine independent testing program









Scan to download technical brochure today!



# A guide to our concrete fasteners & fixings range.

- We have refined a list of the top 11 concrete fastener and fixing options - available and discontinued - so you can quickly identify which best suits your job site requirements.

						
	Drop-in Anchor	Vertigo	Vertigo Plus	Drillcutta	PB Hangermate	PB2 Hangermate
	02D10M30	528084	17Z7181SD	05CDC640F10	08PB2M1040	08PB2M1250
		<b>DISCONTINUED</b>				
ROD SIZE	M10	M10	M10/M12	M10	M10	M12
LENGTH	30mm	40mm	54mm	40mm	40mm	50mm
DRILL DIAMETER	12mm	6.5mm	3/8 Imperial	6.0mm	6.0mm	8.0mm
SOCKET SIZE	-	1/2 Imperial	11/16 Imperial	13mm	13mm	15mm
BOX QTY	50 per box	-	-	100 per box	100 per box	100 per box
C1 SEISMIC RATING	N/A	N/A	US Seismic Rating, no ETA	C1, ETA Approved	C1, ETA Approved	C1, ETA Approved
TRADE COMMENTS	The old way of hanging M10 allthread	The "original" vertigo, now replaced by a seismic approved one.	The "Gold" one was Powers answer in Imperial 3/8 Drillsize.	Great product, a replacement for the old 0528084 original vertigo, way faster to instal than a dropin - can buy these in a bucket too!	The "Hangermate" still called a Vertigo by many a contractor, and a fantastic approved fixing	The seismic approved "Hangermate" in M12 - so fast to install!





Scan to download fasteners & fixings section of the catalogue today!



Male Hangermate

08PB2M1055-M



TSM Female Screw

17ZTSM10



TSM Anchor Screw

17ZTSM06043



ICCONS FM753

03FM753-1090



FAZII Fischer

03FAZ1095

**M10**

**M10**

**M6X43**

**M10**

**M10**

ROD SIZE

Also available in M12

Also available in M12

**55mm**

**55mm**

**43mm**

**90mm**

**95mm**

LENGTH

**6.0mm**

**6.0mm**

**6.00mm**

**10mm**

**10mm**

DRILL DIAMETER

**13mm**

**13mm**

**13mm**

**17mm**

**17mm**

SOCKET SIZE

**50 per box**

**50 per box**

**100 per box**

**50 per box**

**50 per box**

BOX QTY

C1, ETA Approved

C1, ETA Approved

C1, ETA Approved

C1 & C2, ETA Approved

C2 Seismic approved

C1 SEISMIC RATING

The "Male Thread Hangermate", saves cutting the stubs of threaded rod.

The "Toge TSM" is better for soft concrete, and a deeper embedment at 55mm.

This cool fixing is 43mm long and works great on 45D brackets still achieving C1 rating

The FM753 through bolt is a fantastic allrounder with ETA and C1 & C2 approvals to boot

Need C2 rating on a IL4 building? Here is the solution, use a coupler to hang allthread!

TRADE COMMENTS

ACURA's diverse range of fasteners & fixings meet varied levels of rating and compliance. Make sure you chat to one of our account managers to ensure you are selecting the right solution for your requirements.





# SUPPORTING YOUR CABLE



## ELECTRICAL CABLE TRAY

THE SOLUTIONS & SERVICE ONLY ACURA CAN PROVIDE.

Commercial and industrial projects tend to use a vast range of cable tray solutions, including a varying range of strut, fixings and suspension accessories.

ACURA keep high stock levels all year round to accommodate for the large and frequent orders, allowing us to dispatch last minute orders quickly, delivering to site within hours thanks to our multiple delivery runs in both South Australia and Western Australia.

Our range has been utilised on numerous construction sites, such as Drakes Distribution Center, The Repat Hospital, Mitsubishi Motors Head Quarters (images to the right)

and defence projects like VTF Port Wakefield.

For outdoor projects, that see high levels of corrosion, the range of hot dip galvanised cable tray is best suited.

Where trades are only utilising lightweight cables and when the requirements need airflow and ventilation, there is a range of perforated cable tray options.

By far, the most popular tray option throughout 2020 was those that featured fire rating to ensure that the respective projects met full compliance with industry standards.

### ONSITE: MITSUBISHI MOTORS SA HQ



Images taken by account manager Garth Hack.



## Fixings, strut & support.

As we pride ourselves on offering complete solutions, it comes at no surprise that here at ACURA, we continue to stock a vast range of fixings, strut and support accessories to ensure your purchasing process is smooth and simple.

This allows us to develop case by case methods for each trade, on each project.

Our range of strut is held in various types, sizes and finishes including solid, slotted and back to back, galvabond, hot dip galvanised in 3 and 6m lengths.

In addition, one of our top selling solutions of 2020, the Zip Clip Hanging System is a strong and high-spec suspension solution that also matches the growing demand for

aesthetically appealing industrial elements.

You can browse our full range of cable tray alternatives and fixings, strut and support ranges in our online catalogue by scanning the QR code below.

Alternatively, you can contact the customer service team to arrange a hard copy today on 1300 750 750.

SCAN TO SEE RELEVANT CATALOGUE PAGES.



## The versatile, cost effective & safe solution

The Velpress Press Fit Connection System is fully certified by Auspress, reliable and simple to use, secure with permanent joints, practical design, and flame free installation.

Fully certified and guaranteed with 25 year warranty leak-proof joints, Velpress is versatile, cost effective and safe. The Velpress joints can't be tampered with and the design ensures easy access. With a simple installation method and no brazing, it only takes seconds to create a permanent joint between pipe and fitting.



PRESS-FIT CONNECTION SYSTEM BY AUSPRESS

ACURA's Velpress range consists of fittings sized 15-100mm.

Velpress Press-Fit Connection System is always cost effective in material, time and labour. Velpress offers a simple installation method that does not require brazing.

Significantly improves the pipe and flow performance as well as the efficiencies created through the Velpress Installation method. Velpress is cost effective and also minimises material, time & labour.



Compatible with  
Rothenberger &  
Viega press tools.

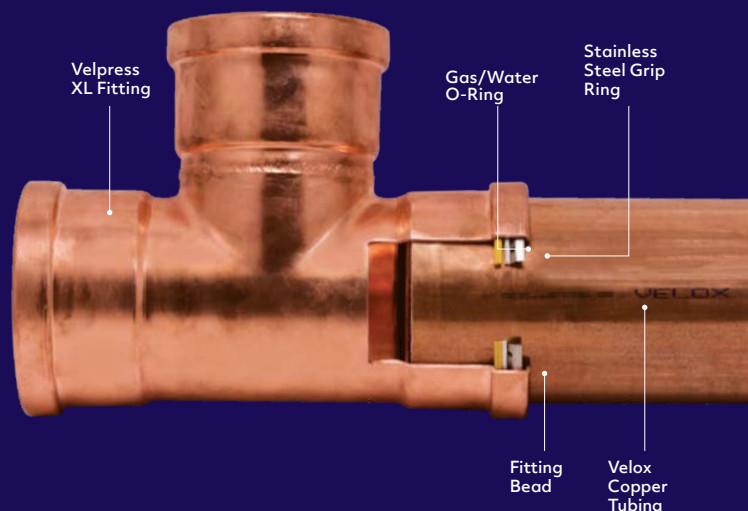
To discuss the Velpress solution and which other press tools it is compatible with, contact Account Manager James on 1300 750 750.

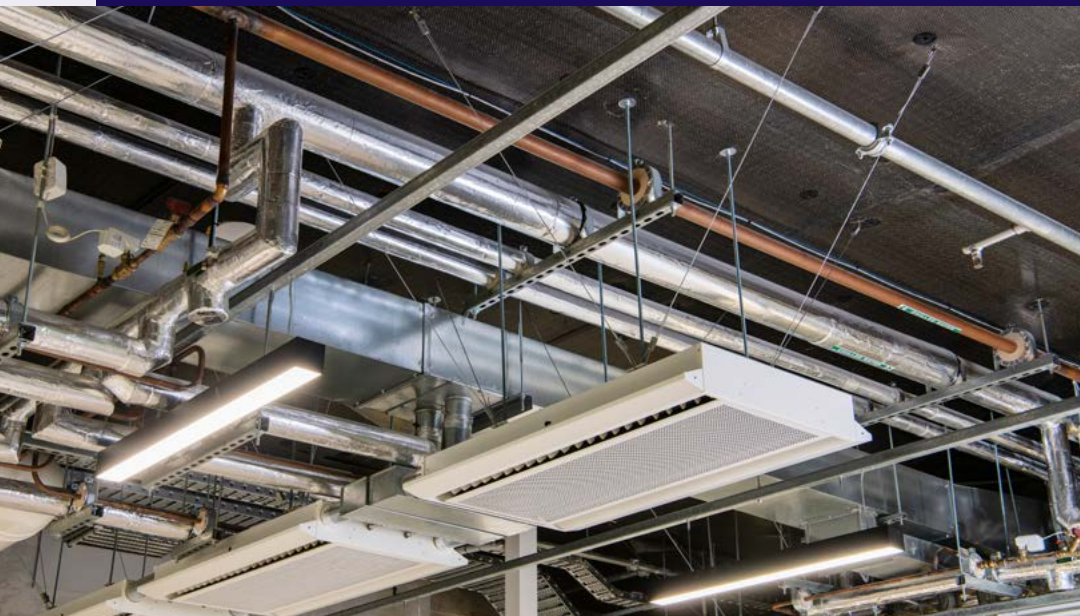


PRESS-FIT CONNECTION SYSTEM BY AUSPRESS



Velpress XL has only three internal parts, the O-ring, grip ring and the seal. Both parts have an internal diameter larger than the tube, which allows for easy tube insertion and pre press leak indication.





ON SITE: TAFE SA, TONSLEY SA

# Seismic restraints; importance of rod stiffener.

Reinforce building elements to prevent damage in the case of an earthquake.



Simply put, seismic restraints are reinforcements that by design, prevent earthquakes from damaging non-structural elements.

Non-structural elements include the likes of ducting, pipework, cable tray, partitions and suspended ceilings. These elements are not a part of the primary or secondary structural systems of a building, and as a result they lack structural restraint.

If there is inadequate restraint, in the case of an earthquake, occupants of the building are put at extensive risk.

One of the common questions we get asked is, when is a rod stiffener required, and why is it needed?

## Importance of rod stiffener

Threaded rods are designed and manufactured purely for gravity loads. The uplifting forces that come with

seismic events easily exceed the dead load on threaded rod, resulting in compressive forces.

Rod stiffeners provide additional support for bracing to prevent buckling of the rods.

The specific needs, sizes and number of clamps used to attach the rod stiffener angle to the hanger rod required to achieve compliance is completely dependent on several variables including:

- The hanger rod size & spacing
- Horizontal seismic force being restrained
- Weight of the duct or pipe to be supported
- Seismic restraint installation angle
- Single hanger rod or trapeze supported pipe or duct.

Ensuring seismic compliance is far from a "one size fits all" approach. As each

construction site presents its own hurdles and challenges, each requirement varies.

ACURA has been involved in many projects providing complete services seismic design and product specification for mechanical, electrical, and fire services. Projects range from IL (Importance Level 1 to Importance Level 4 performance categories; in Concrete Anchors C1 and C2, C2 holding a higher level of seismic compliance.

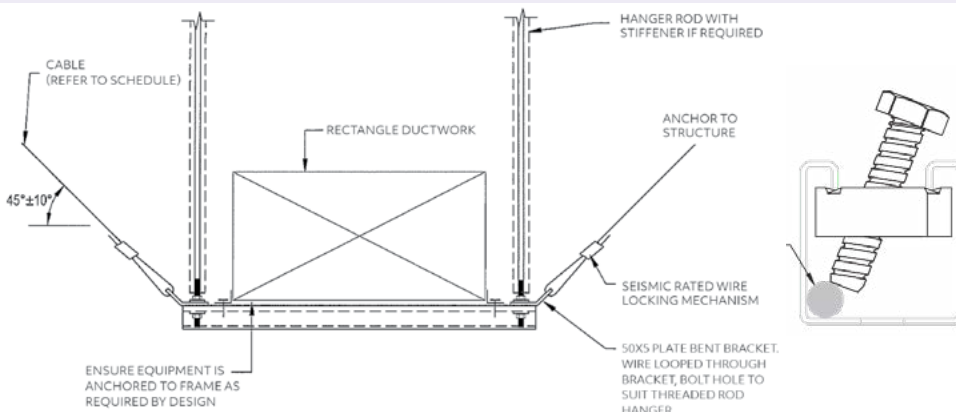
To ensure your project is built correctly to achieve seismic compliance, we encourage you to contact the ACURA seismic team.

We work with you to engineer a solution that is compliant, and deliver a cost effective solution.

**Not sure which solution is best for your project?**

Contact the ACURA seismic team today to discuss your projects requirements.

**1300 750 750**



1300 750 750  
sales@acuragroup.com.au  
www.acuragroup.com.au

◆ **HEAD OFFICE**  
10 Selgar Avenue  
Tonsley, SA 5042

◆ **WA BRANCH**  
19 Wicks Street  
Bayswater, WA 6053