



ACURA

ISSUE 2 | OCTOBER 2020

# ON SITE

 **armorgard**  
ticking every box.

**NOW IN STOCK &  
EXCLUSIVE TO ACURA  
IN SA, WA & NT**

**BREAKING  
NEW GROUND**  
**MITSUBISHI MOTORS  
NEW SA HOME**

Page 6

**SWITCHED ON**  
**THE NEW DATA CENTRE CONNECTS  
PERTH TO THE WORLD**

Page 3

**IN THE SPOTLIGHT**

  
**SureFIX**  
PIPE CLAMPS  
Page 2



**INSIDE**

**SUREFIX PIPE CLAMPS**  
Page 2

**NEXTDC DATA CENTER - OPEN**  
Page 3

**NEW ARMORGARD SOLUTIONS**  
Page 4

**MITSUBISHI MOTORS OFFICE**  
Page 6

**\$300MILLION - ONE SUBIACO**  
Page 8



**SureFIX**  
PIPE CLAMPS

## SureFix Pipe Clamps

SureFix ISO Clips are double screw clamps for suspending all pipes with a unique rubber insulation design to prevent rolling and binding. Unmatched performance for all pipes including: PVC, HDPE, Copper, Steel and PEX.

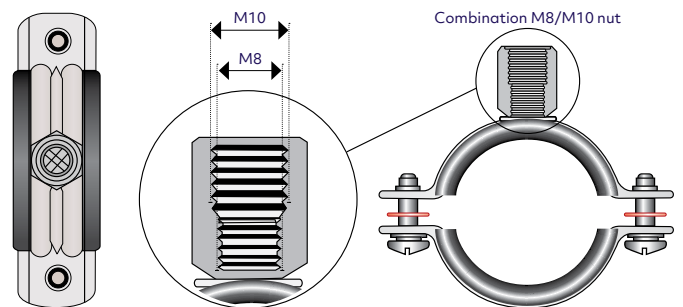
### Features

- Unique rubber design to prevent rolling and binding which allows pipes to slide on installation
- EPDM isolation rubber for sound reduction up to 15Db (DIN4109)
- High strength engineered Steel Profile design
- M8-M10 Combination Nut for connection
- Plastic shake proof washer prevents bolts falling out on installation
- Finish: 8-12micron Electro-zinc plating

### Applications

Recommended for the suspension and support of stationary pipelines where noise reduction is required in both vertical and horizontal application.

- To suit all pipes from 12 mm to 168 mm including PVC, HDPE, Copper, Steel and Pex
- Temperature rating from -50°C up to +110°C



### Related Products



Part# 15MMP10

**ACURA Mounting Plates**  
Centre, male thread



Part# 13TRM103

**Threaded Rod**  
Quality threaded rod kept at high stock levels.



Part# 19T10

**T Nut**  
Inserted into strut channel and rotated 90 degrees, fixed into position using locknut, providing an M10 stub for mounting pipe clamps.

# New age data center

The NextDC P2 Data Centre in Perth's CBD officially opened its doors in July 2020.

The \$192 million building now allows sophisticated digital data delivery to local organizations, allowing enhanced connectivity capability to critical digital services.

P2 spans across 10 storeys, delivering 10,000 square meters of technical space and 20 megawatts of power to the Western Australia economy.

As the only data center solutions company in the country to provide customers with 100% uptime, this build required an unparalleled level of quality and resilience.

The NextDC P2 Data Centre is completely fault tolerant, which is revolutionary in the current digital era. No business can afford to be offline – every department from sales, marketing and communications, procurement to payroll, production compliance, security and so on depend on digital infrastructure.

**PROJECT:** P2 DC DATA CENTER, PERTH WA

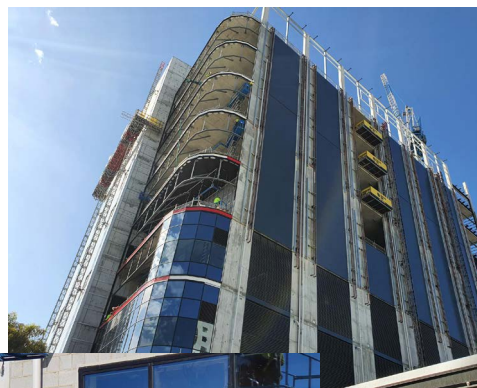
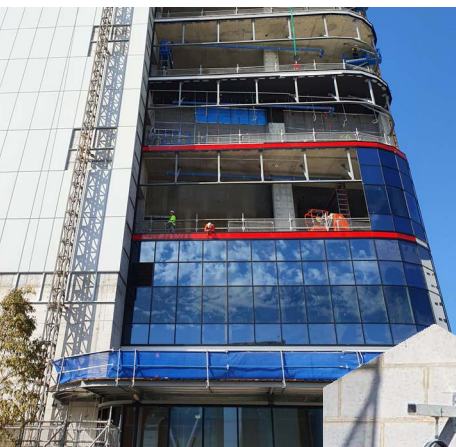
**STATUS:** COMPLETE

**PROJECT VALUE:** \$195 Million



This build required many high-level solutions to ensure the site could live up to the high expectations and fault tolerant claims.

One of ACURA's leading solutions, the SureFix rubber lined clamps have been featured across the project, being utilised by multiple trades on site. Delivering to major trades on site – the WA ACURA team knew the importance of delivering high quality solutions to site on time.



# ACURA

EXCLUSIVE IN SA, WA & NT



# armorgard

ticking every box.

The highly anticipated Armorgard range is held exclusively at ACURA in South Australia, Western Australia and Northern Territory.

There is a vast range of products specifically designed to keep your tools and equipment safe and secure on site, as well as some cutting-edge, industry leading solutions that will make life on site more efficient and safer.

**"You won't find the same products anywhere else, and you certainly won't find better"**



## Mobile Tuffbench

**The universal mobile workbench that's also a heavy-duty cabinet!**

A combination of heavy-duty storage cabinet and multi-purpose work surface, this innovative workbench makes any job that bit easier, while ensuring that your tools and equipment remain safe from thieves and damage.

Its ultra-tough surface is ideal for fixing chain vice, engineers' vice and other equipment, making it indispensable for M&E contractors when pipe threading and bending.

## Pipestor PS6

**The mobile secure storage trunk that keeps your copper piping safe and organised**

The PipeStor portable secure storage trunk, gives you the peace of mind that your copper piping is safe 24/7.

The interior is divided into four sections to accommodate different sizes and styles of pipes – including plastic and metal conduit, trunking and cable tray – and is secured on one end with a heavy duty door and lock.

Versatile design, it can be easily extended to take longer lengths of pipe by adding optional extra sections as required.



FORK SKIDS FOR EASY TRANSPORTATION

POWDER COATED FOR MAXIMUM DURABILITY

INTERNALLY DIVIDED INTO 4 SEPARATE COMPARTMENTS

SECURED WITH A 5-LEVER DEADLOCK

# Fittingstor FC6

The secure storage cabinet designed to keep the 'copper thieves' at bay!

The high value of copper fittings and cabling means that theft is on the rise, with criminals targeting construction sites on a daily basis. Don't make it easy for them!

FittingStor is designed to secure all your costly M&E components and tools in one safe, easily portable location.

Featuring adjustable shelves, removable fitting bins and heavy duty castors for ease of movement, this innovative product is in high demand among site contractors and available in 4 different configurations.



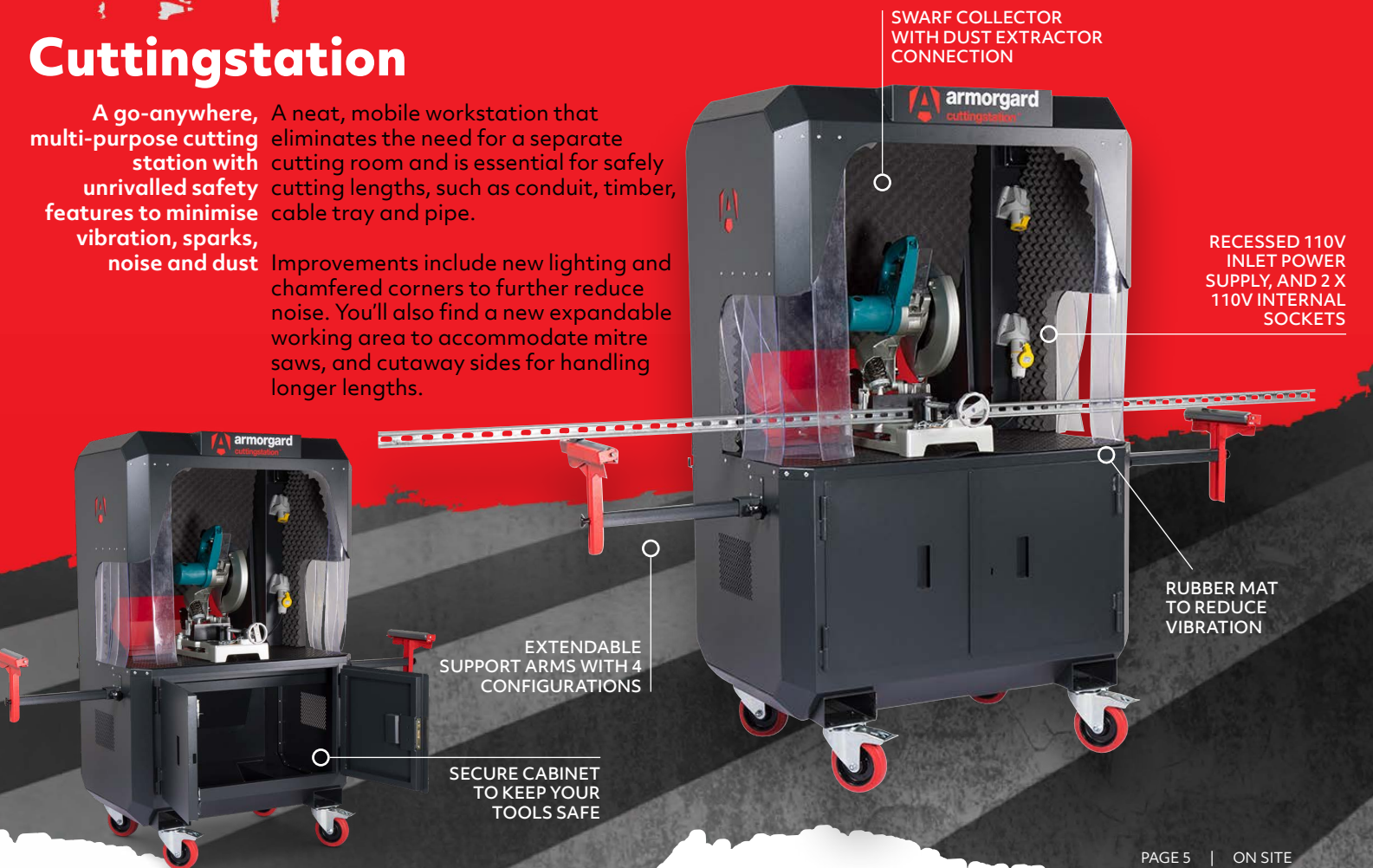
CONTACT YOUR ACURA ACCOUNT MANAGER TODAY TO VIEW THE FULL RANGE OR CALL US ON 1300 750 750 TO FIND OUT MORE

## Cuttingstation

A go-anywhere, multi-purpose cutting station with unrivalled safety features to minimise vibration, sparks, noise and dust

A neat, mobile workstation that eliminates the need for a separate cutting room and is essential for safely cutting lengths, such as conduit, timber, cable tray and pipe.

Improvements include new lighting and chamfered corners to further reduce noise. You'll also find a new expandable working area to accommodate mitre saws, and cutaway sides for handling longer lengths.



SWARF COLLECTOR WITH DUST EXTRACTOR CONNECTION

RECESSED 110V INLET POWER SUPPLY, AND 2 X 110V INTERNAL SOCKETS

RUBBER MAT TO REDUCE VIBRATION

EXTENDABLE SUPPORT ARMS WITH 4 CONFIGURATIONS

SECURE CABINET TO KEEP YOUR TOOLS SAFE

**PROJECT:** MITSUBISHI MOTORS HEAD OFFICE, ADELAIDE SA

**STATUS:** IN CONSTRUCTION

**PROJECT VALUE:** \$26 Million



## BREAKING NEW GROUND

THE NEW HOME FOR MITSUBISHI MOTORS IN SOUTH AUSTRALIA

As Mitsubishi Motors Australia (MMAL) celebrate their 40th anniversary throughout 2020, they broke ground on their new home in the Adelaide Airport Business Precinct in May 2020.

As once over-the-fence neighbours to ACURA South Australia in Tonsley, the new Australian, three story facility is re-locating to the intersection of Sir Donald Bradman Drive and Airport Drive, a part of the Airport Business Precinct.

This estimated \$26 million project has a projected completion date falling in early 2021 ready for staff relocation.

It has been said that throughout the

lifetime of this project, it will create around 700 construction jobs for South Australian trades, welcomed news in the current climate.

ACURA are delivering to multiple key trades on site, ensuring the build keeps to timeline, with five daily run times and high stock levels kept.

There has already been a range of solutions delivered to site across all the key trades including seismic rated fixings, duct and pipe supports, fire collars and much more.

The facility has been specifically designed to facilitate a more innovative and agile way of working, thus it comes

as no surprise that innovative ACURA solutions such as Zip-Clip Strut Trapeze feature throughout the build.

Read over the page on page 7 for more information on this solution.

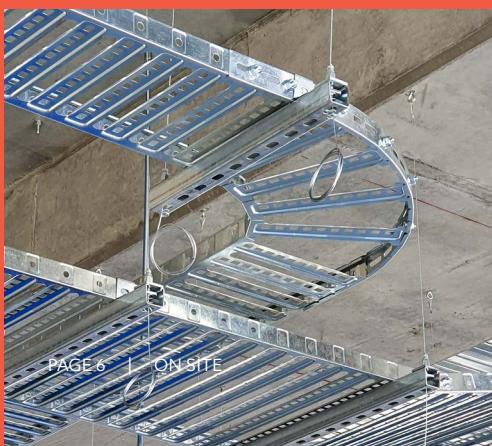
Let ACURA take the stress out of your next project - have the team of specialists and highly qualified engineers ensure your project is compliant.



### TRADES



Images taken by ACURA Account Manager Garth Hack on September 15<sup>th</sup> 2020 showcases the full cable support system using ACURA Zip Clip, strut and cable tray. We've also provided the great new black pipe sleeves featured below.



We don't just have the products, our product specialists combine with qualified engineers to create end-to-end solutions together.

Contact our team today to find your custom solution.

**1300 750 750**



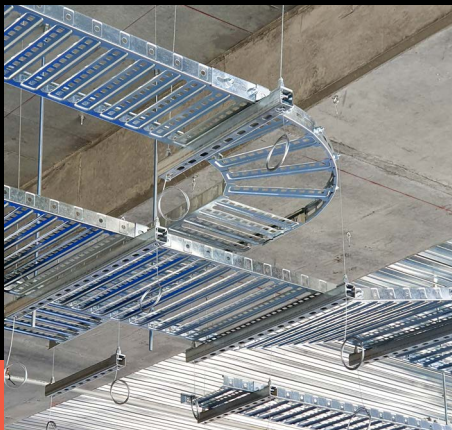
## THE STRUT-LOCK SOLUTION TRAPEZE M8 SYSTEM



STRUT-LOCK is the safe, lockable solution for single and multi-tiered arrangements of cable management & HVAC applications.



When installed as part of a wire suspension system it delivers an impressive safety factor of 5:1, with weight loading of 45kg per wire.



### APPLICATIONS

- Single-tier trapeze brackets
- Multi-tier trapeze brackets
- For 41x41 & 41x21 channel
- Can be utilised with other channel types. Ensure compatible channel nuts are used.

ACURA Supplied Strut-lock, tray and tray support solution to the new Mitsubishi site, featured on the opposite page, page 6.



### ZIP-CLIP

## SUPERIOR HANGING TECHNOLOGY

Zip-Clip is a range of innovative products designed for speed and ease of use. The clip is manufactured from a high quality zinc alloy. The oil impregnated sintered metal wedge is designed to offer the best locking solution.

The stainless steel spring ensures the wedge engages first time. The galvanised high tensile wire rope supplied offers you a better SWL than those found on the market. All our engineered suspension products are designed with quality and safety in mind.



SOLUTION BY  
**ACURA**



**PROJECT:** ONE SUBIACO, PERTH WA  
**STATUS:** IN CONSTRUCTION  
**PROJECT VALUE:** \$300 million

In August 2020, construction began on the \$300 million development, Subiaco One - Subiaco's first high-rise luxury apartments. The development is expected to top out by November 2021.

As one of the biggest residential projects to go ahead in Western Australia, the complex houses 245 residential apartments across three boutique buildings.

With what is being dubbed as unmatched luxury in the Western Australian market, this complex is set to break apartment sale price records.

The jewels of the crown in this complex are the penthouses located on the top floors, offering sweeping views across Perth, the Indian Ocean and Rottneest. Each penthouse features 1,100 square meters of floor space.



First looks at the \$17 million penthouse boasts an extensive list of amenities, only seen in some of the most exclusive residences around the world, including private gym, sauna, indoor and outdoor pools, separate wing for butlers/nannies, \$400,000 automation system and much, much more.

The degree of high end finishes throughout this build are paramount, so it comes as no surprise that many contractors are partnering with ACURA on site to ensure they deliver a high quality product on time.

# WIN

WINNER ANNOUNCED ON  
SOCIALS ON NOVEMBER 30<sup>TH</sup> 2020



## TROTEC LASER DISTANCE METER

### THE BEST PHOTO WINS A TROTEC LASER DISTANCE METER VALUED AT \$165

#### HOW TO WIN:



##### 1 SNAP

Snap a picture of your ACURA delivery box on site



##### 2 SHARE

Upload to INSTAGRAM & tag  
**@acuragroup** with **#withyouonsite**  
(Feed post or Insta Story)



##### 3 FOLLOW

Follow **@acuragroup** on Instagram



 **ACURA**  
WITH YOU ON SITE

1300 750 750  
sales@acuragroup.com.au  
www.acuragroup.com.au

◆ **HEAD OFFICE**  
10 Selgar Avenue  
Tonsley, SA 5042

◆ **WA BRANCH**  
19 Wicks Street  
Bayswater, WA 6053